



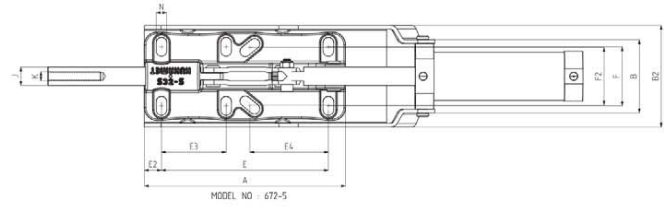
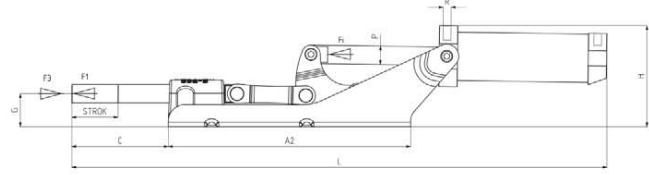
## Pnömatik İtme-Çekme Bağlantı Elemanları Pneumatic Push-Pull Type Toggle Clamps

672

new

MODEL NO	F1 (N)	F3 (N)	F1 (N)	Vn (dm <sup>3</sup> )	STROK	AĞIRLIK (WEIGHT) (gr)	BAR
672-5 (Ø 20)	7500	18450	1100	2,8	95	5260	6

F1 : BASKI KUVVETİ ( EXERTING FORCE ) , F3 : TUTMA KAPASİTESİ ( HOLDING CAPACITY ) , F1 : UYGULAMA KUVVETİ ( APPLIED FORCE )  
Vn , 6 BAR BASINÇTA ÇİFT HAREKET İÇİN HAVA TÜKETİM MİKTARIDIR ( Vn , AIR CONSUMPTION PER DOUBLE STROKE IN dm<sup>3</sup> AT 6 BAR )



**Açık Tipi: Yatay Tabanlı, Döküm Gövdeli, Ön Bağlantılı**  
Body Mounting Base: Horizontal, Casting, Tied Front

MODEL NO	A	A2	B	B2	C	D	E	E2	E3	E4	F	F2	G	H	J	K	L	M	N	P	R	PISTON Ø
672-5 (Ø 20)	218	263	79	110	105	180,5	18,5	70	80-90	55-73	54-70,5	36	110	20	M12	578	11,5x20,5	Ø 20	G1/8	50		

