

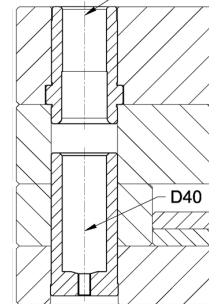
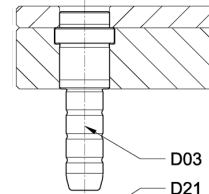
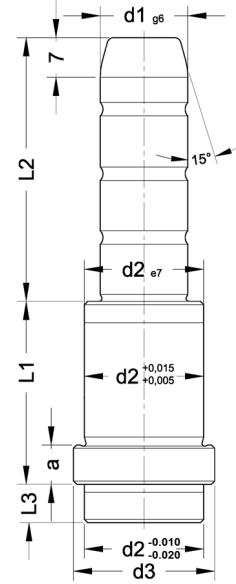
**D03**

Kuyruklu Kolon / Tailed Guide Pillar

Malzeme - Material : Asil Çelik 1.1213 (Cf53)  
Sertlik - Hardness : 62± 2 HRC  
Isıl İşlem - Heat Treatment : İndüksiyon (Induction)  
≈DIN 16761 - A



Sipariş Kodu	d1	Sipariş Kodu	d1	L1	L2	L3	d2	d3	a
D03_14017035	14	D03_15017035	15	17	35	9	20	25	6
055		055			55				
075		075			75				
095		095			95				
D03_14022030	14	D03_15022030	15	22	30	9	20	25	6
050		050			50				
070		070			70				
090		090			90				
110		110			110				
125		125			125				
150		150			150				
D03_14027030	14	D03_15027030	15	27	30	9	20	25	6
045		045			45				
065		065			65				
085		085			85				
105		105			105				
125		125			125				
145		145			145				
165		165			165				
D03_14036035	14	D03_15036035	15	36	35	9	20	25	6
055		055			55				
075		075			75				
095		095			95				
115		115			115				
125		125			125				
145		145			145				
155		155			155				
D03_14046035	14	D03_15046035	15	46	35	9	20	25	6
045		045			45				
065		065			65				
085		085			85				
105		105			105				
125		125			125				
145		145			145				
D03_14056035	14	D03_15056035	15	56	35	9	20	25	6
055		055			55				
075		075			75				
095		095			95				
135		135			135				
D03_14066055	14	D03_15066055	15	66	55	9	20	25	6
065		065			65				
085		085			85				



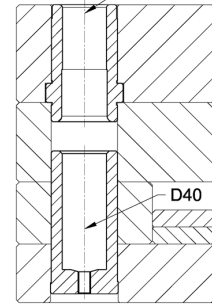
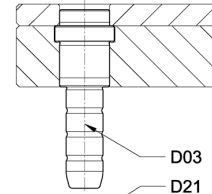
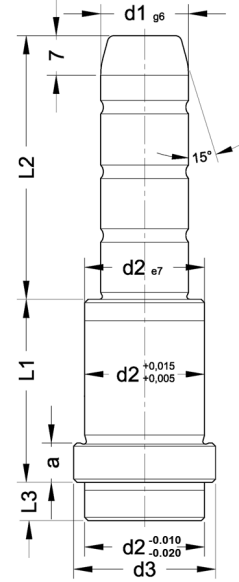
**D03**

Kuyruklu Kolon / Tailed Guide Pillar

Malzeme - Material : Asil Çelik 1.1213 (Cf53)  
Sertlik - Hardness : 62± 2 HRC  
Isıl İşlem - Heat Treatment : İndüksiyon (Induction)  
≈DIN 16761 - A



Sipariş Kodu	d1	Sipariş Kodu	d1	L1	L2	L3	d2	d3	a
D03_14066095	14	D03_15066095	15	66	95	9	20	25	6
105		105			105				
125		125			125				
D03_14076035	14	D03_15076035	15	76	35	9	20	25	6
055		055			55				
075		075			75				
095		095			95				
125		125			125				
D03_14086055	14	D03_15086055	15	86	55	9	20	25	6
075		075			75				
095		095			95				
D03_14096055	14	D03_15096055	15	96	55	9	20	25	6
075		075			75				
095		095			95				
D03_14116075	14	D03_15116075	15	116	75	9	20	25	6
D03_18017035	18	D03_20017035	20	17	35	9	26	31	6
055		055			55				
075		075			75				
120		120			120				
D03_18022035	18	D03_20022035	20	22	35	9	26	31	6
045		045			45				
065		065			65				
085		085			85				
095		095			95				
115		115			115				
D03_18027035	18	D03_20027035	20	27	35	9	26	31	6
045		045			45				
065		065			65				
085		085			85				
105		105			105				
125		125			125				
165		165			165				
225		225			225				
245		245			245				
D03_18036035	18	D03_20036035	20	36	35	9	26	31	6
055		055			55				
075		075			75				
095		095			95				
115		115			115				
135		135			135				
165		165			165				
225		225			225				



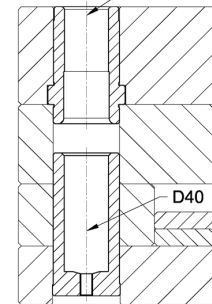
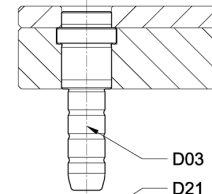
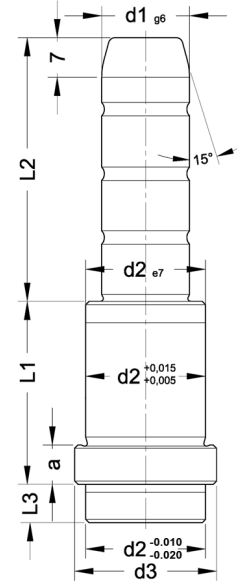
**D03**

Kuyruklu Kolon / Tailed Guide Pillar

Malzeme - Material : Asil Çelik 1.1213 (Cf53)  
Sertlik - Hardness : 62± 2 HRC  
Isıl İşlem - Heat Treatment : İndüksiyon (Induction)  
≈DIN 16761 - A



Sipariş Kodu	d1	Sipariş Kodu	d1	L1	L2	L3	d2	d3	a
D03_18036255	18	D03_20036255	20	36	255	9	26	31	6
D03_18046035	18	D03_20046035	20	46	35	9	26	31	6
045		045			45				
065		065			65				
085		085			85				
105		105			105				
135		135			135				
165		165			165				
245		245			245				
D03_18056035	18	D03_20056035	20	56	35	9	26	31	6
055		055			55				
075		075			75				
095		095			95				
115		115			115				
135		135			135				
155		155			155				
D03_18066035	18	D03_20066035	20	66	35	9	26	31	6
055		055			55				
075		075			75				
095		095			95				
115		115			115				
135		135			135				
145		145			145				
D03_18076035	18	D03_20076035	20	76	35	9	26	31	6
055		055			55				
075		075			75				
095		095			95				
115		115			115				
135		135			135				
D03_18086055	18	D03_20086055	20	86	55	9	26	31	6
075		075			75				
095		095			95				
125		125			125				
135		135			135				
D03_18096055	18	D03_20096055	20	96	55	9	26	31	6
075		075			75				
095		095			95				
D03_18116075	18	D03_20116075	20	116	75	9	26	31	6
115		115			115				
D03_18136135	18	D03_20136135	20	136	135	9	26	31	6
D03_22017035	22	D03_24017035	24	17	35	9	30	35	6
055		055			55				



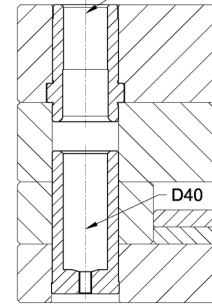
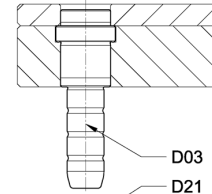
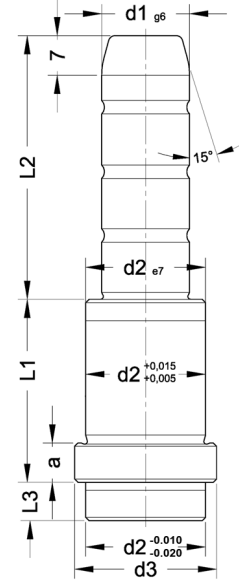
**D03**

Kuyruklu Kolon / Tailed Guide Pillar

Malzeme - Material : Asil Çelik 1.1213 (Cf53)  
 Sertlik - Hardness : 62± 2 HRC  
 Isıl İşlem - Heat Treatment : İndüksiyon (Induction)  
 ≈DIN 16761 - A



Sipariş Kodu	d1	Sipariş Kodu	d1	L1	L2	L3	d2	d3	a
D03_22017075	22	D03_24017075	24	17	75	9	30	35	6
D03_22022035	22	D03_24022035	24	22	35	9	30	35	6
055		055			55				
075		075			75				
095		095			95				
105		105			105				
130		130			130				
D03_22027035	22	D03_24027035	24	27	35	9	30	35	6
045		045			45				
065		065			65				
085		085			85				
105		105			105				
125		125			125				
165		165			165				
205		205			205				
245		245			245				
D03_22036035	22	D03_24036035	24	36	35	9	30	35	6
055		055			55				
075		075			75				
095		095			95				
115		115			115				
135		135			135				
165		165			165				
205		205			205				
245		245			245				
285		285			285				
D03_22046035	22	D03_24046035	24	46	35	9	30	35	6
045		045			45				
065		065			65				
085		085			85				
105		105			105				
125		125			125				
165		165			165				
205		205			205				
D03_22056035	22	D03_24056035	24	56	35	9	30	35	6
055		055			55				
075		075			75				
095		095			95				
115		115			115				
135		135			135				
165		165			165				
205		205			205				



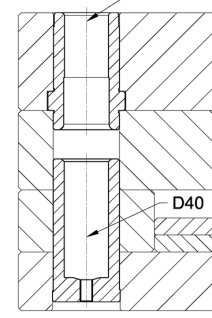
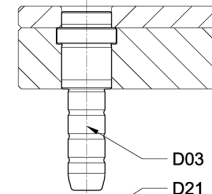
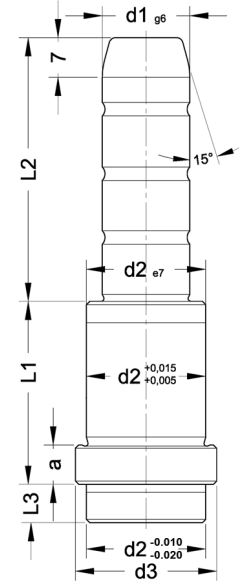
**D03**

Kuyruklu Kolon / Tailed Guide Pillar

Malzeme - Material : Asil Çelik 1.1213 (Cf53)  
 Sertlik - Hardness : 62± 2 HRC  
 Isıl İşlem - Heat Treatment : İndüksiyon (Induction)  
 ≈DIN 16761 - A



Sipariş Kodu	d1	Sipariş Kodu	d1	L1	L2	L3	d2	d3	a
D03_22066035	22	D03_24066035	24	66	35	9	30	35	6
055		055			55				
075		075			75				
095		095			95				
115		115			115				
135		135			135				
155		155			155				
D03_22076035	22	D03_24076035	24	76	35	9	30	35	6
055		055			55				
075		075			75				
095		095			95				
115		115			115				
145		145			145				
D03_22086055	22	D03_24086055	24	86	55	9	30	35	6
075		075			75				
095		095			95				
125		125			125				
135		135			135				
D03_22096055	22	D03_24096055	24	96	55	9	30	35	6
075		075			75				
095		095			95				
125		125			125				
D03_22106055	22	D03_24106055	24	106	55	9	30	35	6
075		075			75				
095		095			95				
115		115			115				
D03_22116075	22	D03_24116075	24	116	75	9	30	35	6
115		115			115				
155		155			155				
D03_22136095	22	D03_24136095	24	136	95	9	30	35	6
135		135			135				
D03_30027035	30	D03_32027035	32	27	35	9	42	47	6
045		045			45				
065		065			65				
085		085			85				
105		105			105				
125		125			125				
145		145			145				
165		165			165				
185		185			185				
245		245			245				
285		285			285				



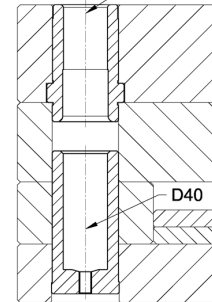
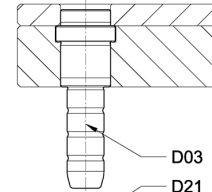
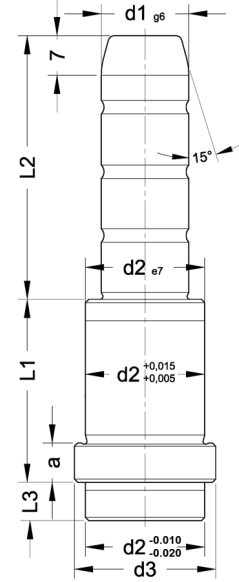
**D03**

Kuyruklu Kolon / Tailed Guide Pillar

Malzeme - Material : Asil Çelik 1.1213 (Cf53)  
 Sertlik - Hardness : 62± 2 HRC  
 Isıl İşlem - Heat Treatment : İndüksiyon (Induction)  
 ≈DIN 16761 - A



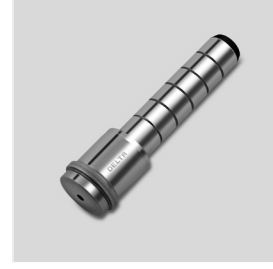
Sipariş Kodu	d1	Sipariş Kodu	d1	L1	L2	L3	d2	d3	a
D03_30036035	30	D03_32036035	32	36	35	9	42	47	6
055		055			55				
075		075			75				
095		095			95				
115		115			115				
135		135			135				
155		155			155				
245		245			245				
285		285			285				
D03_30046045	30	D03_32046045	32	46	45	9	42	47	6
065		065			65				
085		085			85				
105		105			105				
125		125			125				
145		145			145				
165		165			165				
245		245			245				
285		285			285				
D03_30056045	30	D03_32056045	32	56	45	9	42	47	6
055		055			55				
075		075			75				
095		095			95				
115		115			115				
135		135			135				
155		155			155				
175		175			175				
245		245			245				
295		295			295				
D03_30066045	30	D03_32066045	32	66	45	9	42	47	6
055		055			55				
075		075			75				
095		095			95				
115		115			115				
135		135			135				
155		155			155				
175		175			175				
245		245			245				
295		295			295				
D03_30076055	30	D03_32076055	32	76	55	9	42	47	6
075		075			75				
095		095			95				
115		115			115				



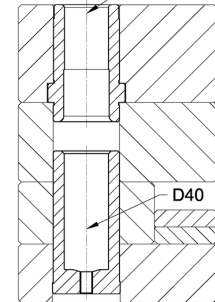
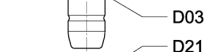
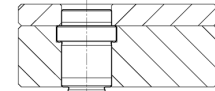
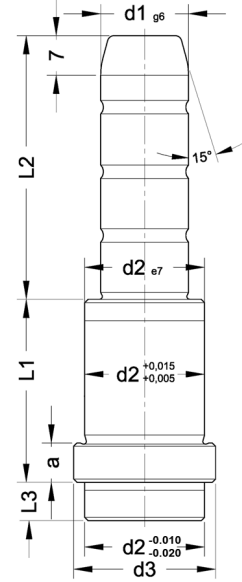
**D03**

Kuyruklu Kolon / Tailed Guide Pillar

Malzeme - Material : Asil Çelik 1.1213 (Cf53)  
Sertlik - Hardness : 62± 2 HRC  
Isıl İşlem - Heat Treatment : İndüksiyon (Induction)  
≈DIN 16761 - A



Sipariş Kodu	d1	Sipariş Kodu	d1	L1	L2	L3	d2	d3	a
D03_30076135	30	D03_32076135	32	76	135	9	42	47	6
155		155			155				
225		225			225				
D03_30086055	30	D03_32086055	32	86	55	9	42	47	6
075		075			75				
095		095			95				
115		115			115				
135		135			135				
155		155			155				
225		225			225				
D03_30096055	30	D03_32096055	32	96	55	9	42	47	6
075		075			75				
095		095			95				
115		115			115				
135		135			135				
155		155			155				
205		205			205				
D03_30106075	30	D03_32106075	32	106	75	9	42	47	6
095		095			95				
115		115			115				
125		125			125				
145		145			145				
165		165			165				
D03_30116075	30	D03_32116075	32	116	75	9	42	47	6
095		095			95				
115		115			115				
135		135			135				
155		155			155				
D03_30136095	30	D03_32136095	32	136	95	9	42	47	6
115		115			115				
135		135			135				
155		155			155				
D03_30156115	30	D03_32156115	32	156	115	9	42	47	6
155		155			155				
D03_30196155	30	D03_32196155	32	196	155	9	42	47	6
195		195			195				
D03_40046095	40	D03_42046095	42	46	95	12	54	60	10
165		165			165				
D03_40056075	40	D03_42056075	42	56	75	12	54	60	10
115		115			115				
155		155			155				
195		195			195				



**D03**

Kuyruklu Kolon / Tailed Guide Pillar

Malzeme - Material : Asil Çelik 1.1213 (C153)  
 Sertlik - Hardness : 62± 2 HRC  
 Isıl İşlem - Heat Treatment : İndüksiyon (Induction)  
 ≈DIN 16761 - A



Sipariş Kodu	d1	Sipariş Kodu	d1	L1	L2	L3	d2	d3	a
D03_40066075	40	D03_42066075	42	66	75	12	54	60	10
135		135			135				
D03_40076075	40	D03_42076075	42	76	75	12	54	60	10
115		115			115				
175		175			175				
D03_40086075	40	D03_42086075	42	86	75	12	54	60	10
135		135			135				
D03_40096075	40	D03_42096075	42	96	75	12	54	60	10
115		115			115				
155		155			155				
D03_40116095	40	D03_42116095	42	116	95	12	54	60	10
135		135			135				
195		195			195				
D03_40136095	40	D03_42136095	42	136	95	12	54	60	10
135		135			135				
215		215			215				
D03_40156115	40	D03_42156115	42	156	115	12	54	60	10
155		155			155				
215		215			215				
D03_40196155	40	D03_42196155	42	196	155	12	54	60	10
195		195			195				
235		235			235				
D03_40246165	40	D03_42246165	42	246	165	12	54	60	10
245		245			245				

