

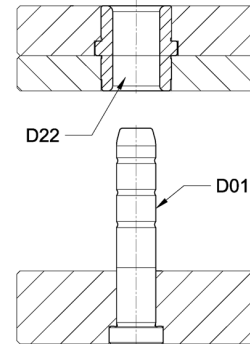
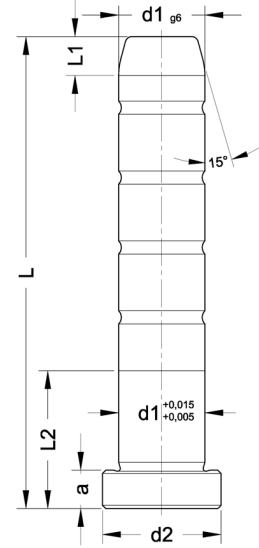
D01

Kolon / Guide Pillar

Malzeme - Material : Asil Çelik 1.1213 (Cf 53)
Sertlik - Hardness : 62± 2 HRC
Isıl İşlem - Heat Treatment : İndüksiyon (Induction)



Sipariş Kodu	Ø	d1	L	L1	L2	d2	a	
D01_10040	10	10	40	4	17	12	3	
060								60
080								80
100								100
120								120
D01_12040	12	12	40	4	17	16	6	
060								60
080								80
100								100
120								120
140								140
D01_14060	14	14	60	7	17	18	8	
080								80
100								100
120								120
140								140
160								160
180								180
D01_16040	16	16	40	7	22	20	8	
060								60
080								80
100								100
120								120
140								140
160								160
180								180
D01_18060	18	18	60	7	27	22	8	
080								80
100								100
120								120
140								140
160								160
180								180
D01_20060	20	20	60	7	27	24	8	
080								80
100								100
120								120
140								140
160								160



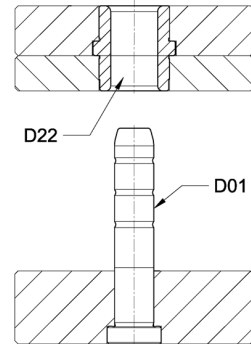
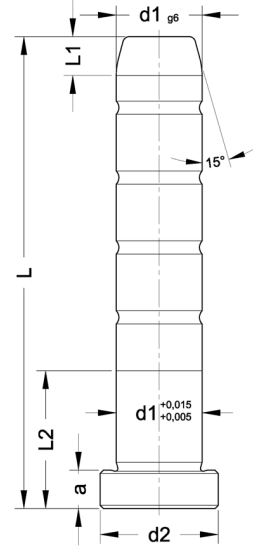
D01

Kolon / Guide Pillar

Malzeme - Material : Asil Çelik 1.1213 (Cf 53)
Sertlik - Hardness : 62± 2 HRC
Isıl İşlem - Heat Treatment : İndüksiyon (Induction)



Sipariş Kodu	Ø	L	L1	L2	d2	a
D01_20160	20	160	7	46	24	8
180		180				
200		200		56		
240		240		76		
D01_22080	22	80	7	36	26	15
100		100				
120		120				
140		140				
160		160		46		
180		180		56		
200		200				
220		220				
240		240		66		
300		300				
D01_24080	24	80	7	36	28	15
100		100				
120		120				
140		140				
160		160		46		
180		180		56		
200		200				
220		220				
240		240		66		
300		300				
D01_25100	25	100	7	35	29	10
120		120				
140		140				
160		160				
180		180				
200		200				
220		220				
250		250				
D01_30100	30	100	7	36	36	15
120		120				
140		140				
160		160		46		
180		180		56		
200		200		66		
220		220				
240		240				
300		300		76		
360		360				



D01

Kolon / Guide Pillar

Malzeme - Material : Asil Çelik 1.1213 (Cf 53)
Sertlik - Hardness : 62± 2 HRC
Isıl İşlem - Heat Treatment : İndüksiyon (Induction)



Sipariş Kodu	Ø	L	L1	L2	d2	a				
D01_40160	40	160	10	46	48	15				
180		180		56						
200		200		66						
220		220								
240		240								
280		280								
300		300		76						
320		320								
360		360								
D01_50160		50		160			10	56	58	15
200				200						
240	240									
300	300		66							
360	360		76							

