

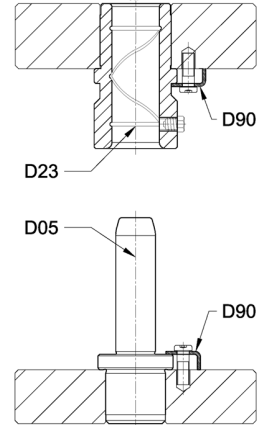
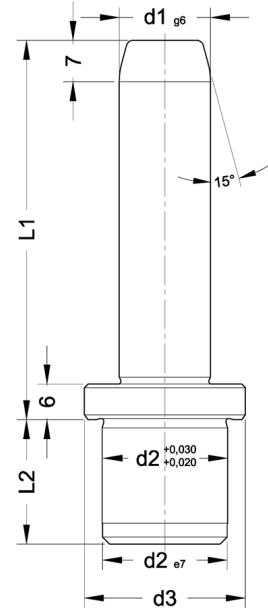
**D05**

Kolon / Guide Pillar

Malzeme - Material : Asil Çelik 1.1213 (Cf 53)  
Sertlik - Hardness : 62± 2 HRC  
Isıl İşlem - Heat Treatment : İndüksiyon (Induction)



Sipariş Kodu	Ø	L1	L2	d2	d3
D05_2010025	20	100	25	28	34
35			35		
D05_2012525		125	25		
35			35		
D05_2014025		140	25		
35			35		
D05_2016025		160	25		
35			35		
D05_2018025	180	25			
35		35			
D05_2510025	25	100	25	34	39
35			35		
D05_2512525		125	25		
35			35		
D05_2514025		140	25		
35			35		
D05_2516025		160	25		
35			35		
D05_2518025	180	25			
35		35			
D05_2520025	200	25			
35		35			
D05_2522025	220	25			
35		35			
D05_2524025	240	25			
35		35			
D05_3012535	30	125	35	39	44
45			45		
D05_3014035		140	35		
45			45		
D05_3016035		160	35		
45			45		
D05_3018035		180	35		
45			45		
D05_3020035	200	35			
45		45			
D05_3022035	220	35			
45		45			
D05_3024035	240	35			
45		45			
D05_3026035	260	35			
45		45			



**D05**

Kolon / Guide Pillar

Malzeme - Material : Asil Çelik 1.1213 (Cf 53)  
Sertlik - Hardness : 62± 2 HRC  
Isıl İşlem - Heat Treatment : İndüksiyon (Induction)



Sipariş Kodu	Ø	L1	L2	d2	d3
D05_3028035	30	280	35	39	44
45			45		
D05_3031535	30	315	35	39	44
45			45		

