

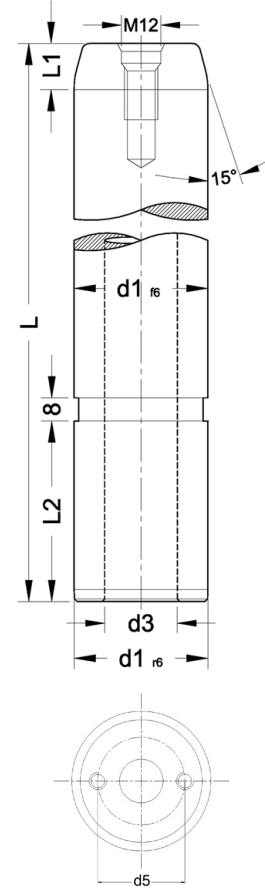
D15

Kolon / Guide Pillar

Malzeme - Material : Çelik (Steel)
Sertlik - Hardness : 60± 2 HRC
Isıl İşlem - Heat Treatment : İndüksiyon (Induction)
DIN 9833 / ISO 9182-3



Sipariş Kodu	Ø	L	d3	d5	L1	L2
D15_025125	25	125			8	40
140		140				
160		160				
180		180				
200		200				
224		224				
D15_032125	32	125			8	45
140		140				
160		160				
180		180				
200		200				
224		224				
250		250				
D15_040140	40	140			8	56
160		160				
180		180				
200		200				
224		224				
250		250				
280		280				
D15_050160	50	160			10	70
180		180				
200		200				
224		224				
250		250				
280		280				
315		315				
355		355				
D15_063180	63	180			10	80
200		200				
224		224				
250		250				
280		280				
315		315				
355		355				
400		400				



Ød1=80'e Kadar Merkez Deliksiz

Ød1=80 Merkezde 1xM12 Diş

Ød1=100'den Sonra Merkez Deliği ve 2xM12 Diş

Up to Ød1=80 without central hole

By Ød1=80 1 lifting thread M12

From Ød1=100 with central hole (through) and with 2 lifting thread M12

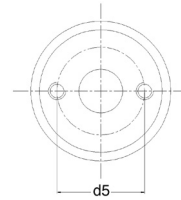
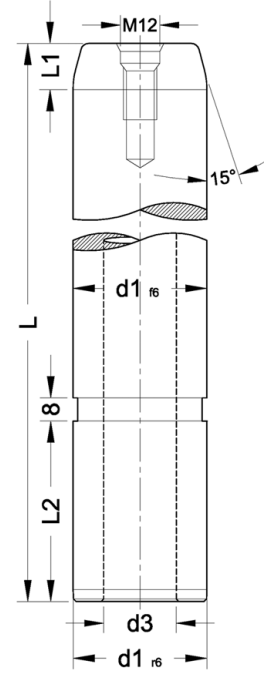
D15

Kolon / Guide Pillar

Malzeme - Material : Çelik (Steel)
Sertlik - Hardness : 60± 2 HRC
Isıl İşlem - Heat Treatment : İndüksiyon (Induction)
DIN 9833 / ISO 9182-3



Sipariş Kodu	PSA Mabec Code	Ø	L	d3	d5	L1	L2
D15_080224		80	224			10	100
250			250				
280			280				
315			315				
355			355				
400			400				
450			450				
500			500				
D15_100250		100	250	50	72	10	125
280			280				
315			315				
355	Z000499647		355				
400			400				
450			450				
500			500				
D15_125315		125	315	65	90	12	140
355			355				
400	Z000499648		400				
450			450				
500			500				
D15_160400		160	400	95	132	12	180
450			450				
500			500				
560			560				



**Ø 100 dahil üzeri ürünler stok tutulmamaktadır.
Fiyat ve termin için bayimiz ile irtibata geçiniz.**

**Ød1=80'e Kadar Merkez Deliksiz
Ød1=80 Merkezde 1xM12 Diş
Ød1=100'den Sonra Merkez Deliği ve
2xM12 Diş**

Up to Ød1=80 without central hole
By Ød1=80 1 lifting thread M12
From Ød1=100 with central hole (through) and
with 2 lifting thread M12