

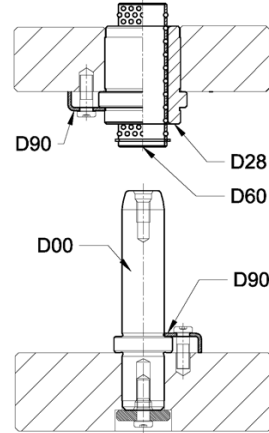
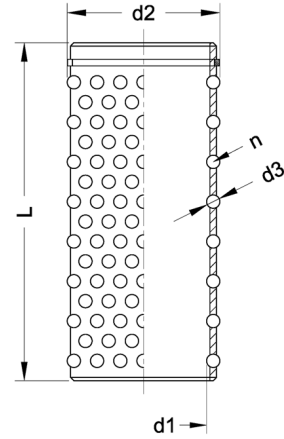
**D60**

Bilyalı Kafes / Ball Cage

Malzeme - Material : Ms58  
Bilya Malzemesi - Ball Material : 100Cr6 (1.3505)  
DIN 471  
DIN 5401



Sipariş Kodu	Ø	L	d2	d3	n
D60_12040	12	40	16	2	176
056		56			272
D60_15045	15	45	21	3	140
056		56			196
071		71			238
D60_16045	16	45	22	3	140
056		56			196
071		71			238
D60_18045	18	45	24	3	176
056		56			240
071		71			272
D60_19045	19	45	25	3	180
056		56			234
071		71			306
080		80			342
095		95			414
D60_20045	20	45	26	3	180
056		56			234
071		71			306
080		80			342
095		95			414
D60_24045	24	45	30	3	180
056		56			240
071		71			280
080		80			320
095		95			440
105		105			480
120		120			560
D60_25045	25	45	31	3	180
056		56			240
071		71			280
080		80			320
095		95			440
105		105			480
120		120			560
D60_30045	30	45	38	4	140
056		56			180
075		75			240
080		80			280
095		95			340
105		105			380
120		120			420
140		140			500



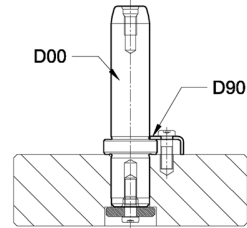
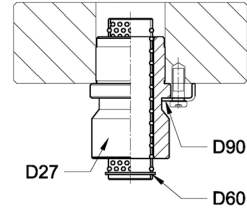
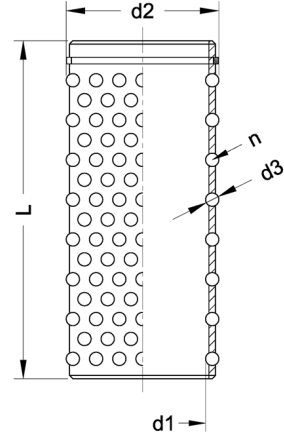
**D60**

Bilyalı Kafes / Ball Cage

Malzeme - Material : Ms58  
Bilya Malzemesi - Ball Material : 100Cr6 (1.3505)  
DIN 471  
DIN 5401



Sipariş Kodu	Ø d1	L	d2	d3	n
D60_32045	32	45	40	4	140
056		56			180
075		75			240
080		80			280
095		95			340
105		105			380
120		120			420
140		140			500
D60_38056		38			56
071	71		288		
080	80		336		
095	95		408		
105	105		456		
120	120		528		
140	140		624		
160	160		720		
D60_40056	40		56	48	4
071		71	288		
080		80	336		
095		95	408		
105		105	456		
120		120	528		
140		140	624		
160		160	720		
D60_48071		48	71		
080	80		390		
095	95		480		
105	105		540		
120	120		600		
140	140		720		
160	160		840		
D60_50071	50	71	58	4	360
080		80			390
095		95			480
105		105			540
120		120			600
140		140			720
160		160			840
D60_60085	60	85	68	4	504
95		95			558
105		105			612
120		120			720
140		140			828



**D60**

Bilyalı Kafes / Ball Cage

Malzeme - Material : Ms58  
 Bilya Malzemesi - Ball Material : 100Cr6 (1.3505)  
 DIN 471  
 DIN 5401



Sipariş Kodu	Ø	L	d2	d3	n
D60_60160	60	160	68	4	972
D60_63085	63	85	71	4	504
95		95			558
105		105			612
120		120			720
140		140			828
160		160			972
D60_80120	80	120	92	6	286
140		140			330
160		160			374
180		180			462
200		200			506

