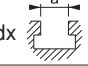



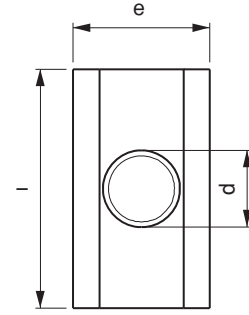
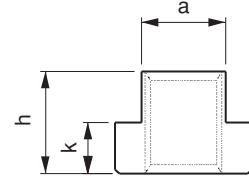
Referans Nr.	dx 	a	e	l	h	k	
1710-0608	M6x8	7.7	13	26	10	6	14
1710-0810	M8x10	9.7	15	30	12	6	25
1710-1012	M10x12	11.7	18	36	14	7	49
1710-1214	M12x14	13.7	22	44	16	8	82
1710-1416	M14x16	15.7	25	50	18	9	120
1710-1618	M16x18	17.7	28	56	20	10	165
1710-1820	M18x20	19.7	32	64	24	12	260
1710-2022	M20x22	21.7	35	70	28	14	365
1710-2224	M22x24	23.7	40	80	32	16	535
1710-2428	M24x28	27.7	44	88	36	18	745
1710-3036	M30x36	35.6	54	108	44	22	1390

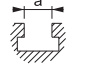

**Ürün Nr. 1710 Uzun "T" Pabuç**

- Hassas makina pleytlerinde "T" kanalı korur
- Malzeme: Ck45 DIN
- Sertlik: 32-35 HRC
- Siyah kaplama

**Product Nr. 1710 Long "T" Clamp**

- This clamp protects "T" slot in sensitive machine plates
- Material: Ck45 DIN
- Hardness: 32-35 HRC
- Black coating



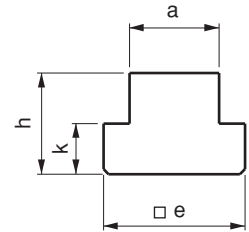
Referans Nr.		a	e	h	k	
1730-06	6	5.7	10	8	4	4
1730-08	8	7.7	13	10	6	10
1730-10	10	9.7	15	12	6	16
1730-12	12	11.7	18	14	7	27
1730-14	14	13.7	22	16	8	50
1730-16	16	15.7	25	18	9	70
1730-18	18	17.7	28	20	10	95
1730-20	20	19.7	32	24	12	150
1730-22	22	21.7	35	28	14	210
1730-24	24	23.7	40	32	16	310
1730-28	28	27.7	44	36	18	430
1730-36	36	35.6	54	44	22	800
1730-42	42	41.6	65	52	26	1400

**Ürün Nr. 1730 Deliksiz "T" Pabuç**

- İsteğe göre delik delme dış çekme uygulanabilir
- Malzeme: Ck45 DIN

**Product Nr. 1730 "T" Clamp without Hole**

- Arbitrary thread cutting can be applied
- Material: Ck45 DIN



**Deliksiz "T" Pabuç**

"T" Clamp without Hole