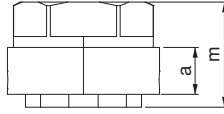


Referans Nr.	metrik	a	d1	e	m	sw	(g)
1840-16	M16	11.5	34	30.7	27.5	27	105
1840-20	M20	14	44	38.8	33	34	210
1840-24	M24	18.5	50.4	46	35	41	365



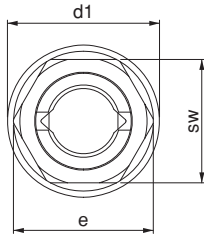
Ürün Nr. 1840 Hızlı Somun

- Somun açık konumda uzun dişlerde hızlı ilerleme kolaylığı sağlar.
- Malzeme: Ck45 DIN
- Sertlik: 30-32 HRC
- Siyah Kaplama



Product Nr. 1840 Quick Nut

- Enables fast sliding on long threads, with nut at open position.
- Material: Ck45 DIN
- Hardness: 30-32 HRC
- Black coating



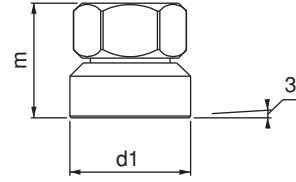
Oynar Başlı Pullu Somun

Ball Head Nut

Referans Nr.	sw	d1	m	(g)	
1850-08	M8	13	17	14	10
1850-10	M10	17	21	18	30
1850-12	M12	19	24	22	40
1850-16	M16	24	30	28	70
1850-20	M20	30	36	35	140
1850-24	M24	36	44	43	260

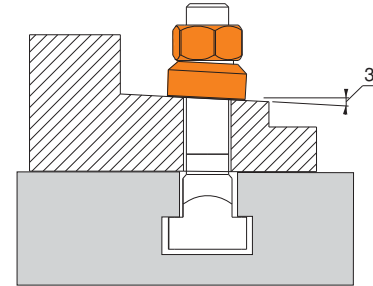
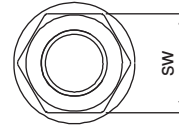
Ürün Nr. 1850 Oynar Başlı Pullu Somun

- Açılı yüzeylerde pulun kendi içindeki hareketinden dolayı kullanım avantajı sağlar
- Malzeme: Ck45 DIN
- Sertlik: 30-32 HRC
- Siyah kaplama



Product Nr. 1850 Ball Head Nut

- It provides advantage for using on angled surfaces due to the movement of the washer within itself
- Material: Ck45 DIN
- Hardness: 30-32 HRC
- Black Coating



Referans Nr.	metrik		d1	d2	s	(g)
	whitworth					
1870-06	M6	1/4	6.4	17	3	6
1870-08	M8	5/16	8.4	23	4	10
1870-10	M10	3/8	10.5	28	4	16
1870-12	M12	1/2	13	35	5	30
1870-14	M14	-	15	40	5	40
1870-16	M16	5/8	17	45	6	60
1870-18	M18	-	19	45	6	60
1870-20	M20	3/4	21	50	6	70
1870-22	M22	7/8	23	50	8	90
1870-24	M24	7/8	25	60	8	140
1870-30	M30	11/8	31	68	10	215
1870-36	M36	11/4	38	80	12	360
1870-42	M42	11/2	44	98	15	640

DIN 6340

Ürün Nr. 1870 Pul

- Malzeme: Ck45 DIN
- Sertlik: 38-42 HRC
- Siyah kaplama

DIN 6340

Product Nr. 1870 Washer

- Material: Ck45 DIN
- Hardness: 38-42 HRC
- Black Coating

Pul Washer

