

**ER-EL**

## ER-EL Zero Clamp Gövde

ER-EL Zero Clamp Body

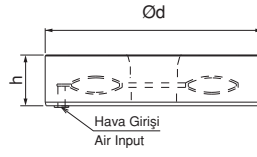
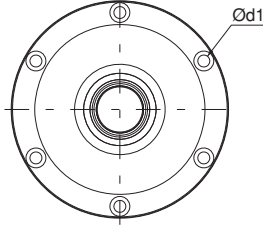
Referans Nr.	d	h	d1	Nm	sıkma kuvveti clamping force Kgf	(g)
1060-090	90	22	M4	5	1250	730
1060-120	120	28	M6	14	2500	1840
1060-138	138	33	M8	35	4000	2860
1060-190	190	38	M8	35	6000	5460

### Ürün Nr. 1060 ER-EL Zero Clamp Gövde

- Min. Bar 5.5
- Max. Bar 8

### Product Nr. 1060 ER-EL Zero Clamp Body

- Min. Bar 5.5
- Max. Bar 8



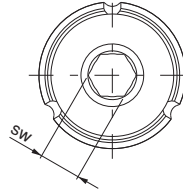
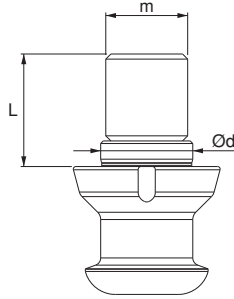
## Çektirme Civatası

Pull Stud

Referans Nr.	m	L	d	sw	Nm	(g)
1065-09012	M12	20	14 k6	6	80	40
1065-12016	M16	22	18 k6	8	170	97
1065-13816	M16	30	25 k6	8	170	235
1065-19024	M24	36	30 k6	10	400	460

### Ürün Nr. 1065 Çektirme Civatası

### Product Nr. 1065 Pull Stud



## Gövde Talaş Koruyucu

Body Chip Protector

Referans Nr.	Zero	(g)
1067-090	90	29
1067-120	120	85
1067-138	138	202
1067-190	190	398

### Ürün Nr. 1067 Gövde Talaş Koruyucu

### Product Nr. 1067 Body Chip Protector

