

Referans Nr.	L	b1	metrik		a	b2	b3	e1	e2	d	(g)
			metrik	whitworth							
1330-06050	50	6,6	M6	1/4	10	20	8	10	20	M8	50
1330-08060	60	9	M8	5/16	12	25	10	13	22	M8	105
1330-10080	80	11	M10	3/8	15	30	12	15	30	M10	210
1330-12100	100	14.5	M12-M14	1/2	20	40	14	21	40	M12	465
1330-12125	125							21	50		590
1330-16125	125	18.5	M16-M18	5/8	25	50	18	26	45	M16	930
1330-16160	160							26	65		1200
1330-20160	160	22.5	M20-M22	3/4	30	60	22	30	60	M20	1710
1330-20200	200							30	80		2170
1330-20250	250							35	100		3885
1330-24160	160							30	60		1965
1330-24200	200	26	M24	1	35	70	26	35	80	M24	2920
1330-24250	250							35	100		3720
1330-24315	315							40	100		6435
1330-30250	250							40	100		4825
1330-30315	315	33	M30	11/4	50	80	34	45	130	M24	7665
1330-36400	400							58	100		14490

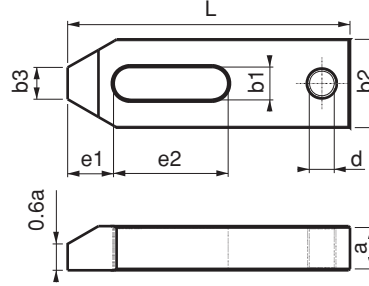


**Ürün Nr. 1330 Destek Delikli Düz Pabuç**

- Malzeme Ck45 DIN
- Sertlik 32-40 HRC
- Siyah Kaplama

**Product Nr. 1330 Straight Clamp with Support Hole**

- Material Ck45 DIN
- Hardness 32-40 HRC
- Black Coating



**Düz Pabuç**

Straight Clamp

Referans Nr.	L	b1	metrik		a	b2	b3	e1	e2	(g)	
			metrik	whitworth							
1350-06050	50	6,6	M6	1/4	10	20	8	10	20	60	
1350-08060	60	9	M8	5/16	12	25	10	13	22	110	
1350-10080	80	11	M10	3/8	15	30	12	15	30	185	
1350-12100	100	14,5	M12-M14	1/2	20	40	14	21	40	480	
1350-12125	125							21	50		610
1350-16125	125	18,5	M16-M18	5/8	25	50	18	26	45	980	
1350-16160	160							26	65		1240
1350-20160	160	22,5	M20-M22	3/4	30	60	22	30	60	1795	
1350-20200	200							30	80		2255
1350-24200	200							30	70		2570
1350-24250	250							35	100		3875
1350-30250	250	33	M30	11/4	40	80	34	45	100	4990	
1350-30315	315							50	130		7885
1350-36400	400	43	M36-M42	11/2	60	100	43	100	150	14450	



**DIN 6314**

**Ürün Nr. 1350 Düz Pabuç**

- Malzeme Ck45 DIN
- Sertlik 32-40 HRC
- Siyah Kaplama

**Product Nr. 1350 Straight Clamp**

- Material Ck45 DIN
- Hardness 32-40 HRC
- Black Coating

