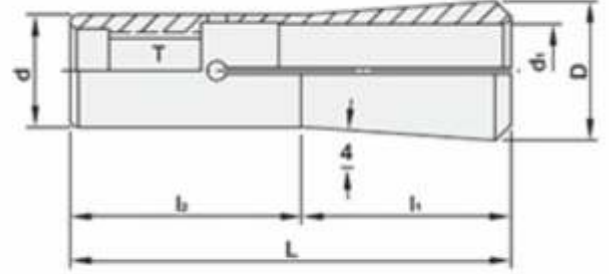




İNCE TİP TUTUCU PENSLERİ



- Steel: SUP-9
- HRC: 46°
- Surface Roughness: Rz2.5 (Ra 0.6)
- Precision: 5 μ (4D length)

MODEL NO.	TYPE	d1	D	d	L	l1	l2	T	WEIGHT (KGS)
SYIC - 18851	SLC - 6	3, 4, 5, 6	10	8	36	24	12	M6 x 1.0P	0.02
SYIC - 18852	SLC - 12	3, 4, 5, 6, 8, 10, 12	18	14.5	57	25.45	31.55	M10 x 1.5P	0.04
SYIC - 18853	SLC - 20	3, 4, 5, 6, 8, 10, 12, 16, 18, 20	27	21	70	35	35	M12 x 1.75P	0.12
SYIC - 18855	SLC - 25	6,8,10,12,16,18,20,25	32.4	25	80	43.5	34.5	M16 x 1.5P	0.16