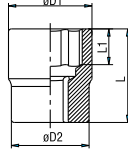


## 1114

1/2" On İki Köşe Lokma Anahtar (mm)  
Socket Wrench 12 Points (mm)

TS ISO 2725 - 1



1/2"

Krom vanadyum, Krom kaplı  
Chrom vanadium, Chrom plated

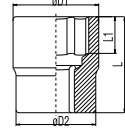
KOD CODE	Ø mm	Ø D1 mm	Ø D2 mm	L mm	L1 mm	g	TL/Ad.
1114 06 1010	10	15	23.3	38	8	60	10, 15,95
1114 06 1011	11	16.4	23.3	38	8	60	10, 15,95
1114 06 1012	12	17.8	23.3	38	9	60	10, 15,95
1114 06 1013	13	19	23.3	38	10	60	10, 17,16
1114 06 1014	14	20.4	23.3	38	11	60	10, 17,16
1114 06 1015	15	21.6	23.3	38	11	65	10, 17,16
1114 06 1016	16	22.9	24	38	11	70	10, 17,94
1114 06 1017	17	24	22.5	38	12	70	10, 17,94
1114 06 1018	18	25.2	23	38	13	70	10, 17,94
1114 06 1019	19	26.8	23	38	13	75	10, 18,74
1114 06 1020	20	28	23	38	13	80	10, 18,74
1114 06 1021	21	29.2	23	38	13	80	5, 18,74
1114 06 1022	22	30.2	24	40	15	95	5, 18,74
1114 06 1023	23	31.4	25	40	15	100	5, 19,56
1114 06 1024	24	32.6	26	42	17	105	5, 19,56
1114 06 1026	26	35.3	28	42	17	135	5, 19,56
1114 06 1027	27	36.6	28	42	19	135	5, 22,43
1114 06 1028	28	37.8	30	42	20	155	5, 22,43
1114 06 1030	30	40	30	44	21	165	5, 22,43
1114 06 1032	32	42.5	30	44	23	180	5, 22,43

## 1413

1/2" On İki Köşe Lokma Anahtar (SAE)  
Socket Wrench 12 Points (SAE)



1/2"



Krom vanadyum, Krom kaplı  
Chrom vanadium, Chrom plated

KOD CODE	Ø inch	Ø D1 mm	Ø D2 mm	L mm	L1 mm	g	TL/Ad.
1413 06 1008	5/16"	13.2	21.8	37	6	45	10, 17,06
1413 06 1095	3/8"	15	21.8	37	8	50	10, 17,06
1413 06 1010	7/16"	16.4	23.3	37	9	60	10, 17,06
1413 06 1011	15/32"	18	23.3	37	9	60	10, 17,06
1413 06 1012	1/2"	19	23.3	37	9	60	10, 18,35
1413 06 1013	9/16"	20.4	23.3	37	11	60	10, 18,35
1413 06 1014	19/32"	21.6	23.3	37	11	65	10, 18,35
1413 06 1015	5/8"	23.1	22	38	11	70	10, 19,21
1413 06 1016	11/16"	24.5	22.5	38	11	70	10, 19,21
1413 06 1017	3/4"	26.8	23	38	13	75	10, 20,08
1413 06 1020	25/32"	28	23	38	13	75	10, 20,08
1413 06 1021	13/16"	28.6	23	38	13	80	10, 20,08
1413 06 1022	7/8"	30.2	24	40	15	90	5, 20,08
1413 06 1024	15/16"	32.6	26	42	17	115	5, 20,92
1413 06 1025	1"	35	28	42	17	130	5, 20,92
1413 06 1027	1 1/16"	36.6	28	42	19	135	5, 23,98
1413 06 1029	1 1/8"	38.8	30	42	19	170	5, 23,98
1413 06 1030	1 3/16"	40	29.5	44	20	170	5, 23,98
1413 06 1032	1 1/4"	42.5	30	44	22	185	5, 23,98



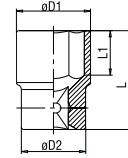
## 1113

1/2" Manyetik Lokma (mm)  
Socket Wrench 6 Points (mm)

TS ISO 2725 - 1



1/2"



Krom vanadyum, Krom kaplı  
Chrom vanadium, Chrom plated

KOD CODE	Ø mm	Ø D1 mm	Ø D2 mm	L mm	L1 mm	g	TL/Ad.
1113 06 3008	8	13.2	21.8	38	7	55	10, 12,42
1113 06 3010	10	15	23.3	38	8	55	10, 19,70
1113 06 3012	12	17.8	23.3	38	9	60	10, 19,70
1113 06 3014	14	20.4	23.3	38	11	65	10, 22,11

(\*) İşaretili olan ürünler stoklarla sınırlıdır.