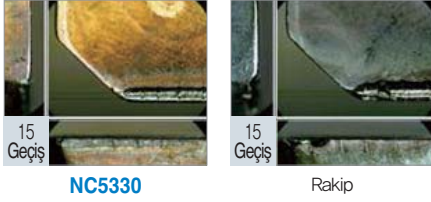


Uygulama örnekleri (NC5330/NC5340)

P Alaşımli Çelik (4140)

- **Kesme Koşulu** vc (m/dak) = 250, fz (mm/diş) = 0.30
ap (mm) = 2.0, Kuru
- **Kod** Kesici uçları : SDKN1504AESN-SU (NC5330)
Kater : ADN5125R
- **Test sonucu**

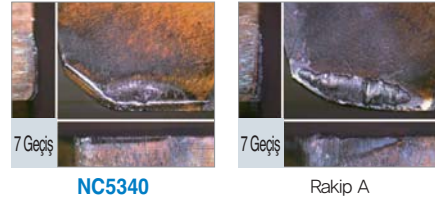


NC5330

Rakip

P Alaşımli Çelik (SCM440)

- **Kesme Koşulu** vc (m/dak) = 300, fz (mm/diş) = 0.30
ap (mm) = 2.0, ıslak
- **Kod** Kesici uçları : SPCN1203EDR (NC5340)
Kater : EPN4125R
- **Test sonucu**

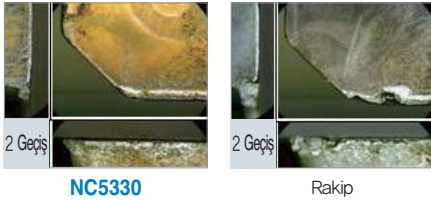


NC5340

Rakip A

M Paslanmaz Çelik (AISI 304)

- **Kesme Koşulu** vc (m/dak) = 150, fz (mm/diş) = 0.25
ap (mm) = 2.0, Kuru
- **Kod** Kesici uçları : SDKN1504AESN-SU (NC5330)
Kater : ADN5125R
- **Test sonucu**

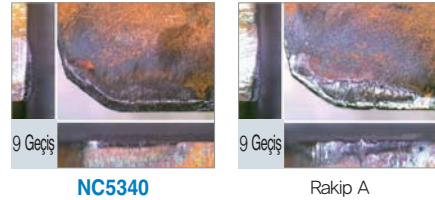


NC5330

Rakip

P Karbonlu çelik (S45C)

- **Kesme Koşulu** vc (m/dak) = 350, fz (mm/diş) = 0.35
ap (mm) = 2.0, ıslak
- **Kod** Kesici uçları : SPCN1203EDR (NC5340)
Kater : EPN4125R
- **Test sonucu**

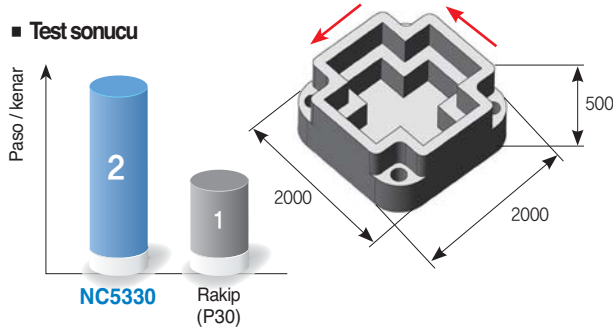


NC5340

Rakip A

K Sfero Dökme Demir (GGG 50)

- **Kesme Koşulu** vc (m/dak) = 200, fz (mm/diş) = 0.20
ap (mm) = 5.0, Kuru
- **Kod** Kesici uçları : SDKN1504AESN-SU (NC5330)
Kater : ADN5100R
- **Test sonucu**

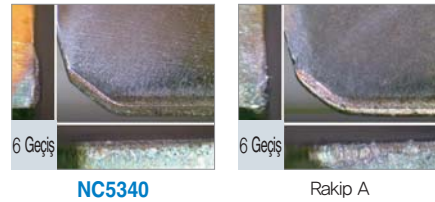


NC5330

Rakip (P30)

K Pik döküm (FC250)

- **Kesme Koşulu** vc (m/dak) = 400, fz (mm/diş) = 0.20
ap (mm) = 3.0, ıslak
- **Kod** Kesici uçları : SPCN1203EDR (NC5340)
Kater : EPN4100R
- **Test sonucu**



NC5340

Rakip A