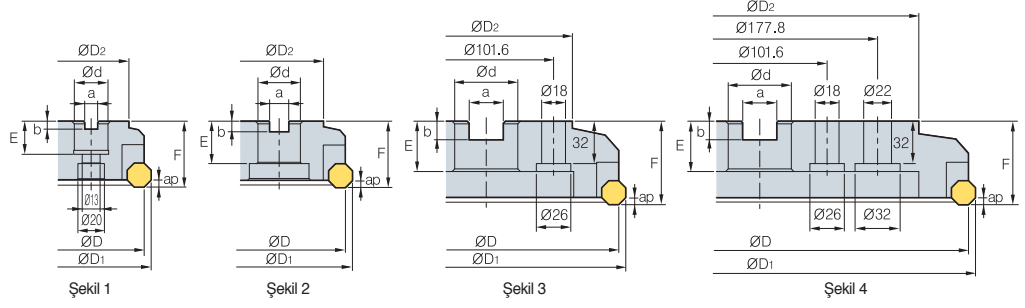
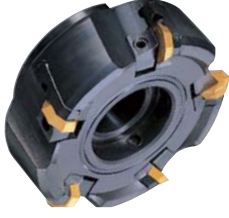


E Double Mill

AFO(M)5000



AA
45°

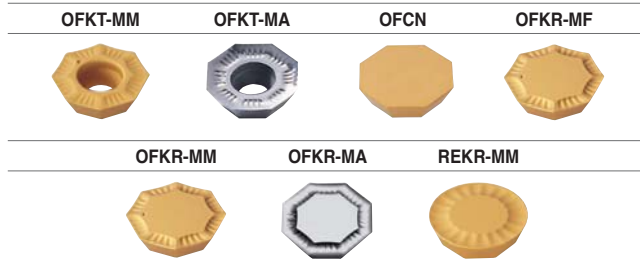
•AR: 15°
•RR: 5°

(mm)

Kod	ØD	ØD ₁	ØD ₂	Ød	a	b	E	F	ap	kg	Şekil	
AFO (AFOM) 5080R/L	5	80	91	60	25.4 (27)	9.5 (12.4)	6 (7)	25 (22)	50	4.8	1.4	1
5100R/L	6	100	111	80	31.75 (32)	12.7 (14.4)	8 (8)	32 (28)	50	4.8	2.0	2
5125R/L	8	125	136	100	38.1 (40)	15.9 (16.4)	10 (9)	38 (30)	63	4.8	3.1	2
5160R/L	10	160	171	120	50.8 (40)	19.0 (16.4)	11 (9)	38 (30)	63	4.8	5.2	2
5200R/L	12	200	211	130	47.625 (60)	25.4 (25.7)	13.5 (14)	38 (38)	63	4.8	7.5	3
5250R/L	16	250	261	180	47.625 (60)	25.4 (25.7)	13.5 (14)	38 (38)	63	4.8	16.1	3
5315R/L	20	315	326	240	47.625 (60)	25.4 (25.7)	13.5 (14)	38 (38)	63	4.8	22.8	4

() Metrik Ölçü

➤ Kullanılabilir Kesici Uçları



Kod	Sement		Kaplama							Sayfa							
	CN2000	CN30	NCM325	NCM335	NC5330	NC5340	NC5350	PC3500	PC3600		PC9530	PC6510	PC5300	PC5400	ST30A	G10	H01
OFCN 0704SN																	E13
0704FN																	
070408SN																	
070408FN																	
OFKR 0704SN-MF			••														E13
070408SN-MF			••														
0704SN-MM			••	••	••	••											
070408SN-MM			••														
0704FN-MA																•	E13
0704EN-MA																	
OFKT 0704SN-MM																	
0704FN-MA																•	E13
0704EN-MA																	
REKR 170400-MM																	E16

➤ Kullanılabilir Malafalar

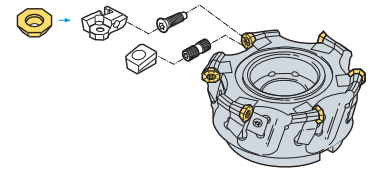
Kod	Genel Malafalar	NC Tip Malafalar	
		AFO	AFOM
AFO(M) 5080R/L	NT*□□ (M/U)-FMA25.4-25	BT**□□-FMA25.4-□□	FMC27
5100R/L	NT*□□ (M/U)-FMA31.75-□□	BT**□□-FMA31.75-□□	FMC32
5125R/L	NT*□□ (M/U)-FMA38.1-□□	BT**□□-FMA38.1-□□	FMB40
5160R/L	NT*□□ (M/U)-FMA50.8-□□	BT**□□-FMA50.8-□□	FMB40
5200R/L	NT*□□ (M/U)-FMA47.625-25, KCP-8***	BT**□□-FMA47.625-□□	FMB60
5250R/L	NT*□□ (M/U)-FMA47.625-25, KCP-8***	BT**□□-FMA47.625-□□	FMB60
5315R/L	KCP-8*** (merkezleme malafası)		

*□□-NT Sayı **□□-BT Sayı ***Üst frezeleme 5

➤ Önerilen Kesme Koşulu

İş parçası	Kesme Koşulu		Kaliteler
	vc (m/dak)	fz (mm/diş)	
P	190~320	0.05~0.20	NCM325 PC3500 ST30A
	161~270	0.05~0.20	
	80~140	0.05~0.20	
M	90~150	0.05~0.20	PC9530
K	140~230	0.05~0.30	PC6510 G10
	50~90	0.05~0.30	

Montaj



➤ Yedek Parçalar

Ölçü	Tespit Parçası	Baskı	Baskı Vidası	Tespit Parça Vidası	Anahtar
Ø80-Ø315	LAF05R/L LAF05R*/L-1*	WEFR/L	DHA0821F	LTX0512	HW40

*: Ø80-Ø100

➤ Kullanılabilir Kesici Uçları E13, E16

➤ Kullanılabilir Malafalar ve Civatalar için sayfa E371-E373



E Frezeleme

58