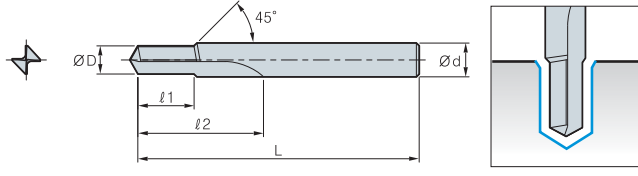
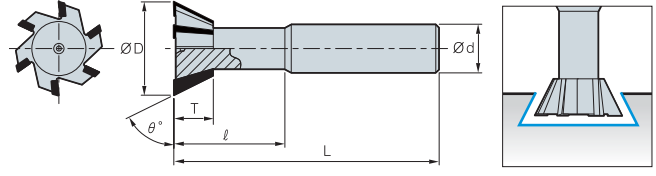


**Perdah Matkabı - Pahlı**

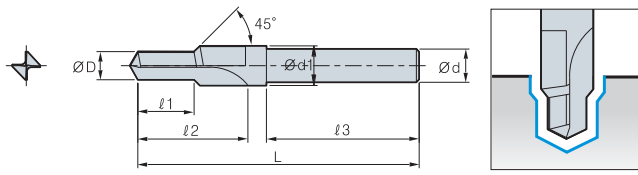
(mm)

Kod	ØD	ℓ1	ℓ2	L	Ød
BDC					

**Kırlangıç Freze**

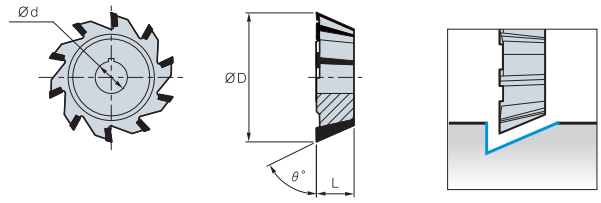
(mm)

Kod	ØD	ℓ	θ°	ℓ1	L	Ød	Ağız Sayısı
DC							

**Perdah Matkabı - Pahlı Kademeli**

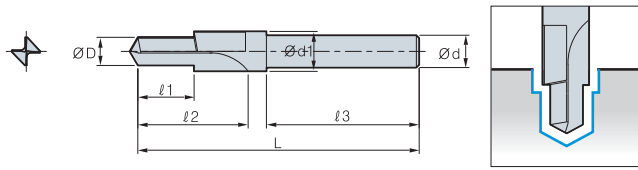
(mm)

Kod	ØD	Ød1	ℓ1	ℓ2	ℓ3	L	Ød
BDS							

**Konik Alın Freze**

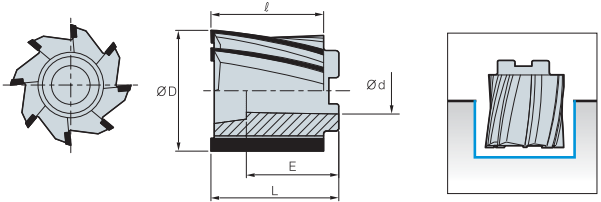
(mm)

Kod	ØD	θ°	Ød	L	Ağız Sayısı
AC					

**Perdah Matkabı - Kademeli**

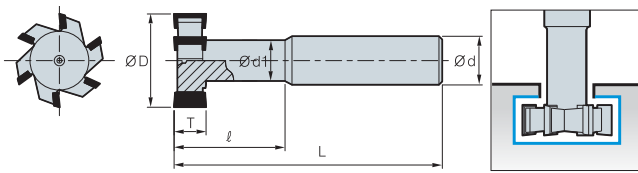
(mm)

Kod	ØD	Ød2	ℓ1	ℓ2	ℓ3	L	Ød
BDCB							

**Vals Alın Freze**

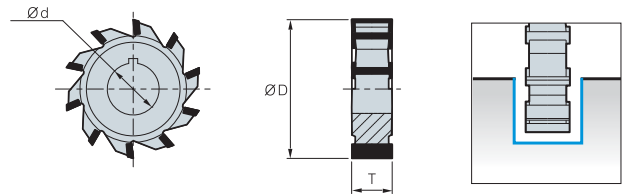
(mm)

Kod	ØD	Ød	ℓ	E	L	Ağız Sayısı
SEM						

**T-Kanal Freze**

(mm)

Kod	ØD	Ød1	T	ℓ	L	Ød	Ağız Sayısı
TC							

**Kanal Freze**

(mm)

Kod	ØD	Ød	T	Ağız Sayısı
SMC				