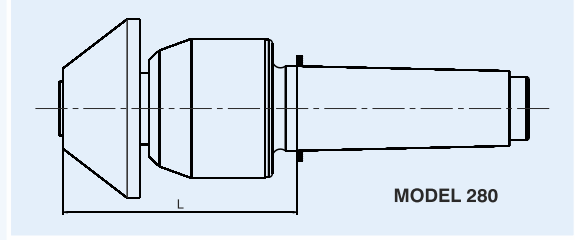




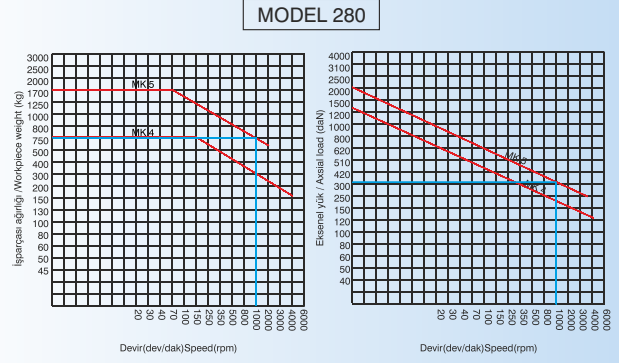
Şapkalı boru puntası

Capped pipe centers



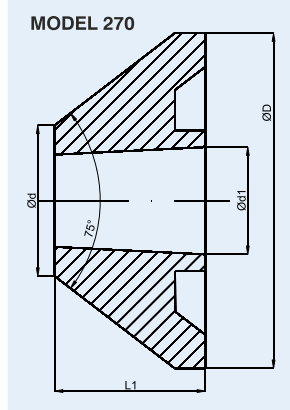
MODEL 280

MODEL / TYPE	280	
MK	4	5
L	mm	116 133
Max İşparçası Ağırlığı	kg	750 1700
Sipariş Kodu / Order Code		C284 C285
Ağırlık / Weight	kg	2.5 4.6



Örnek: 1000 Dev/dak. ile dönen MK5 puntanın taşıya bileceği yük değeri;
 Radyal yük : 1200 kg
 Eksenel yük: 950 daN

Example : Load value that rotary MK5 center could carry with 1000 revolution/min
 Radial load : 1200 Kg
 Axial Load : 950 daN



MODEL 270

Şapkalı Boru Puntası Model 270 / Capped Pipe Centers Type 270

Sipariş Kodu	MK	D	d	d1	L1	Ağırlık (kg)
Order Code						Weight
C410	4	60	30	32	45	1
C420	4	100	45	32	45	1.5
C430	4	150	95	32	45	4.1
C440	4	200	145	32	45	6
C510	5	100	45	40	43	1.5
C520	5	150	95	40	43	4.4
C530	5	200	145	40	43	6.1
C540	5	250	195	40	43	8.1