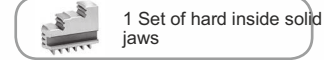


3 Ayaklı Bison Torna Aynası

Code No.	Type	A	B	C	D H7	E	F	Q	G	J	kg
353204010600	3204-80	80	44	3	56	16	67	3	M6	13	1,5
353204020800	3204-100	100	50	3	70	20	83	3	M8	17	2,8
353204030000	3204-125	125	56	4	95	32	108	3	M8	20	5
353204040100	3204-160	160	64,5	4	125	42	140	6	M10	32	10
353204050300	3204-200	200	75	4	160	55	176	6	M10	29	17,5
353204060500	3204-250	250	85	5	200	76	224	6	M12	34	29
353204070700	3204-315	315	94	5	260	103	286	6	M16	43	50
353204080900	3204-400	400	105	5	330	136	362	6	M16	55	85
353204090000	3204-500	500	120	5	420	190	458	6	M16	60	145
353204100500	3204-630	630	135	7	545	252	586	6	M16	70	250
353204110700	3204-800	800	159	12	380	281,4	330,2	6	M24	70	385
353204130000	3204-1000	1000	171	20	520	408	463,6	6	M24	88	690

Larger diameters available upon request!

Standard accessories



Spare parts see pages 80-93

Technical data see pages 94-98

Type 3204



kesici
takımdünyası®



AKİFSAN®
MAKİNA HİRD. SAN. VE TİC. LTD. ŞTİ.

MERKEZ : 100. Yıl Bulvarı Ahi Evran Cad. No: 85

Tel: +90 312 354 43 91 - 354 32 62 Faks: +90 312 385 56 34 E-posta: merkez@akifsan.com

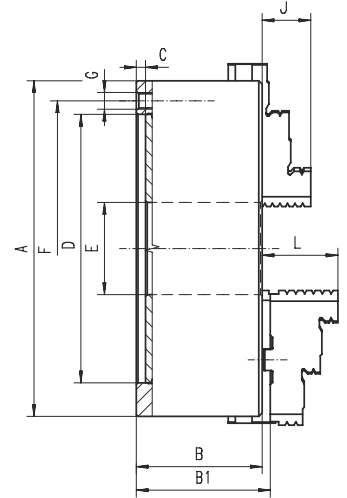
ŞUBE : Melih Gökçek Bulvarı 1445. Sokak No: 10

Tel: +90 312 395 16 18 - 395 16 01 Faks: +90 312 395 75 15 E-posta: sube@akifsan.com

Ostim - Ankara / TÜRKİYE

İvogsan - Ankara - TÜRKİYE

- Ground working surfaces ensure sustained accuracy and repeatability
- Chucks with diameters 1000 mm and above are equipped with additional T-slots
- Mounted on the machine tool spindle from the back of the chuck by using an adapter plate

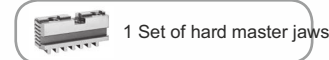


Q - Number of mounting screws

Code No.	Type	A	B	B1	C	D H7	E	F	Q	G	L	kg
353205030800	3205-125	125	56	60,8	4	95	32	108	3	M8	40	5
353205040000	3205-160	160	64,5	69,3	4	125	42	140	6	M10	43	10
353205050100	3205-200	200	75	79,8	4	160	55	176	6	M10	45	17,5
353205060300	3205-250	250	85	88,8	5	200	76	224	6	M12	53	29
353205070500	3205-315	315	94	99,1	5	260	103	286	6	M16	57	50
353205080700	3205-400	400	105	113,8	5	330	136	362	6	M16	67	85
353205090900	3205-500	500	120	130,8	5	420	190	458	6	M16	79	145
353205100300	3205-630	630	135	146,3	7	545	252	586	6	M16	87	250
353205110500	3205-800	800	159	170,3	12	380	281,4	330,2	6	M24	87	385
353205120700	3205-1000	1000	171	179,8	20	520	408	463,6	6	M24	100	690

Larger diameters available upon request!

Standard accessories



Spare parts see pages 80-93

Technical data see pages 94-98

Type 3205

