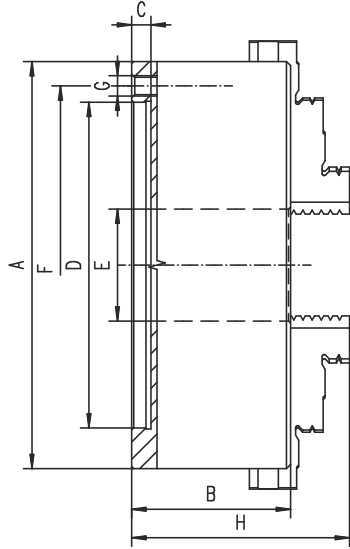




Bison Kepenkli Torna Aynası



Code No.	Type	A	B	C	D H6	E	F	Q	G	H
354505020000	4505-200	200	96	5,5	160	55	176	6	6xM10	127,0
354505030200	4505-250	250	102	6,0	200	76	224	6	6xM12	135,0
354505040400	4505-315	315	117	6,0	260	103	286	6	6xM16	158,5
354505050600	4505-400	400	123	6,3	330	136	362	6	6xM16	182,0
354505060800	4505-500	500	145	8,0	420	190	458	6	6xM16	206,0
354505070000	4505-630	630	160	10,0	545	252	586	6	6xM16	232,0

Larger diameters available upon request!



Type 4505



Code No.	Type	A	B	C	D H6	E	F	Q	G	H
354605020700	4605-200	200	96	5,5	160	55	176	6	6xM10	127,0
354605030900	4605-250	250	102	6,0	200	76	224	6	6xM12	135,0
354605040000	4605-315	315	117	6,0	260	103	286	6	6xM16	158,5
354605050200	4605-400	400	123	6,3	330	136	362	6	6xM16	182,0
354605060400	4605-500	500	145	8,0	420	190	458	6	6xM16	206,0
354605070600	4605-630	630	160	10,0	545	252	586	6	6xM16	232,0

Larger diameters available upon request!



Type 4605



Code No.	Type	A	B	C	D H6	E	F	Q	G	H
354705520800	4705-200	200	96	5,5	160	55	176	6	6xM10	127,0
354705530000	4705-250	250	102	6,0	200	76	224	6	6xM12	135,0
354705540100	4705-315	315	117	6,0	260	103	286	6	6xM16	158,5
354705550300	4705-400	400	123	6,3	330	136	362	6	6xM16	182,0
354705560500	4705-500	500	145	8,0	420	190	458	6	6xM16	206,0
354705570700	4705-630	630	160	10,0	545	252	586	6	6xM16	232,0

Larger diameters available upon request!



Type 4705



- Combines features of both self-centering scroll chucks and independent chucks
- Chuck jaws can be individually adjusted according to the form of the workpiece and the self-centering option assures time efficient repeatability throughout a series of alike operations

Q - Number of mounting screws

Standard accessories



1 Set of solid reversible jaws



1 Wrench

Spare parts see pages 80-93

Technical data see pages 94-98

Code No.	Type	A	B	C	D H6	E	F	Q	G	H
354805520400	4805-200	200	96	5,5	160	55	176	6	6xM10	127,0
354805530600	4805-250	250	102	6,0	200	76	224	6	6xM12	135,0
354805540800	4805-315	315	117	6,0	260	103	286	6	6xM16	158,5
354805550000	4805-400	400	123	6,3	330	136	362	6	6xM16	182,0
354805560100	4805-500	500	145	8,0	420	190	458	6	6xM16	206,0
354805570300	4805-630	630	160	10,0	545	252	586	6	6xM16	232,0

Larger diameters available upon request!



Type 4805

